

Lopital Marina PM Checklist

Marina Part #: _____

Serial Number: _____

Date: _____

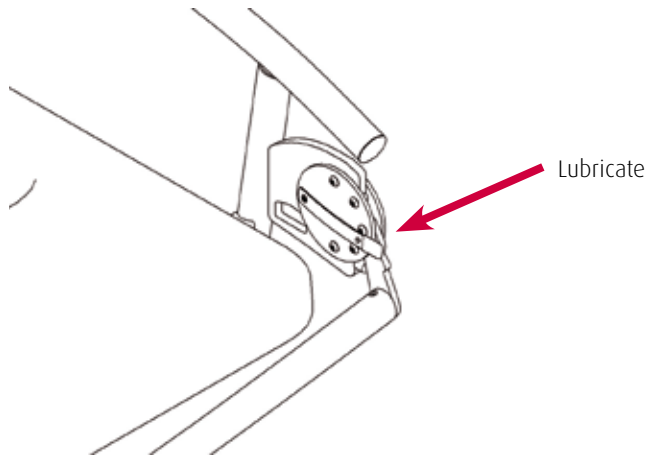
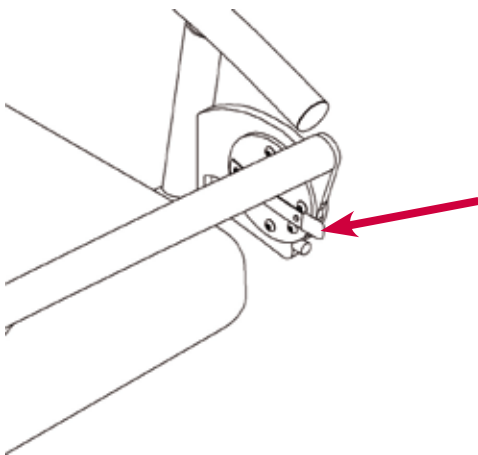
1. General condition of the trolley

Month	12	24	36	48	60	72	84	96	108	120
	C	C	C	C	C	C	C	C	C	C

- Visually check undercarriage, levers, castor caps, side barriers and push handle for any damage, and touch up any painted parts where necessary. _____
- Replace insert caps if they are damaged. _____
- CE sticker should be present and clearly legible; if this is not the case it should be replaced. Also check the sticker with the inspection date. _____
- In the case of widespread corrosion, judge whether this is affecting the structure's strength. _____

2. Side barriers

Month	12	24	36	48	60	72	84	96	108	120
	S	S	S	S	S	S	S	S	S	S



- Both side barriers should open and close smoothly. _____
 - They should be easy to lock and unlock. _____
 - Check whether all the bolts are present and tightly screwed. _____
 - The black or red submersible cap should be undamaged. _____
- Lubricate the hinge between the two hinge plates (preferably with Innotec Ceramic Grease, #03.0121) after removing any excess dirt and corrosion. _____

Required tools

- Touch-up pen Sikkens 477A2.
- Digital spirit level.
- Marina maintenance support bars.
- Allen keys (3, 5, 6, 8 mm).
- Open-end/ring spanners (10, 13, 17, 19 mm).
- Ceramic grease spray 03.0121.

Notes on 1 and 2:

3. Castors + brakes

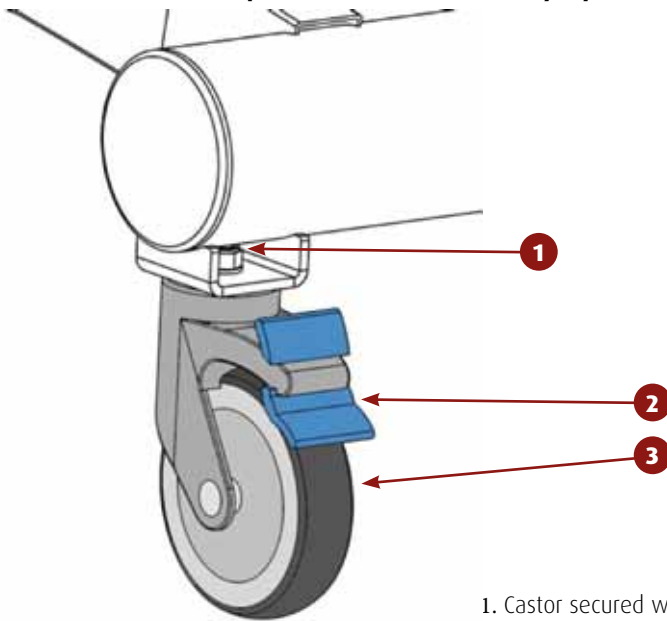
Required tools

- Allen key 8 mm (shortened).
- Open-end/ring spanner 17 mm.
- Lock nut M10 (4x).
- Derrick for Marina trolley.

Month	12	24	36	48	60	72	84	96	108	120
	C	C	C	A	C	C	C	A	C	C

- All four the castors should touch the floor on a flat surface. _____
- If the castors are damaged or worn they have to be replaced; for instance when parts of the tread are missing or when the brakes are no longer working or work very badly. _____
- If the castors are very stiff, you should try to solve this by cleaning them. If this means they have to be detached, they should be refitted afterwards with a new lock nut. _____

It is recommended to replace the castors once every 4 years.



Notes on 3:

1. Castor secured with lock nut. _____
2. Brake flap. _____
3. Swivelling castor. _____

4. Mattress + pillow

Check for any damage and replace where necessary. _____

Notes on 4:

Failure items:

- Damage. _____
- Torn fabric. _____
- **Moisture** in mattress. _____
- _____
- Severe discoloration. _____
- Severe mold (mainly on underside). Clear _____ Needs Cleaned _____

Have the mattress to be cleaned thoroughly and check again. (IF REQUIRED) _____

For reasons of hygiene, it is recommended to replace mattress and pillow once every 5 years.

5. Outlet hose

Required tools

Month	12	24	36	48	60	72	84	96	108	120
	C	C	A	C	C	A	C	C	A	C

Check for any kinks, leaks or blockages. _____

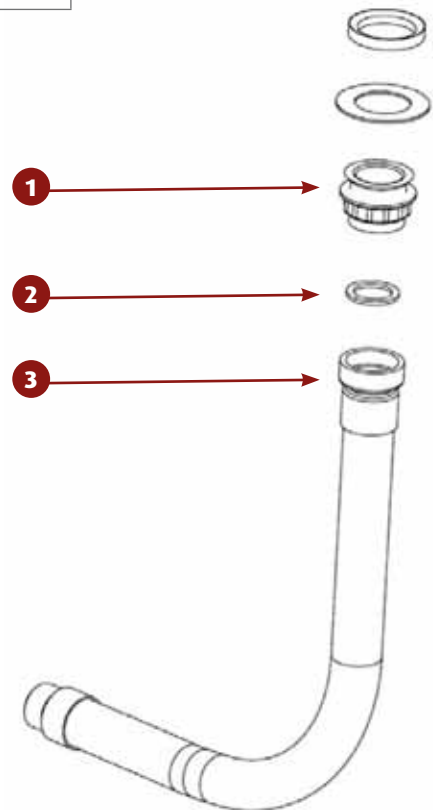
Failure items:

- Kinks. _____
- _____
- Cracks. _____
- _____
- Blockage. _____
- _____
- Cracked swivel. _____
- _____
- Outlet damaged. _____

For reasons of wear and tear, blockage and hygiene, it is strongly recommended to replace the outlet hose once every 3 years.

Notes on 5:

1. Outlet.
2. Seal.
3. Outlet hose.



6. Operation, emergency stop and emergency lowering device (61002350 electric)

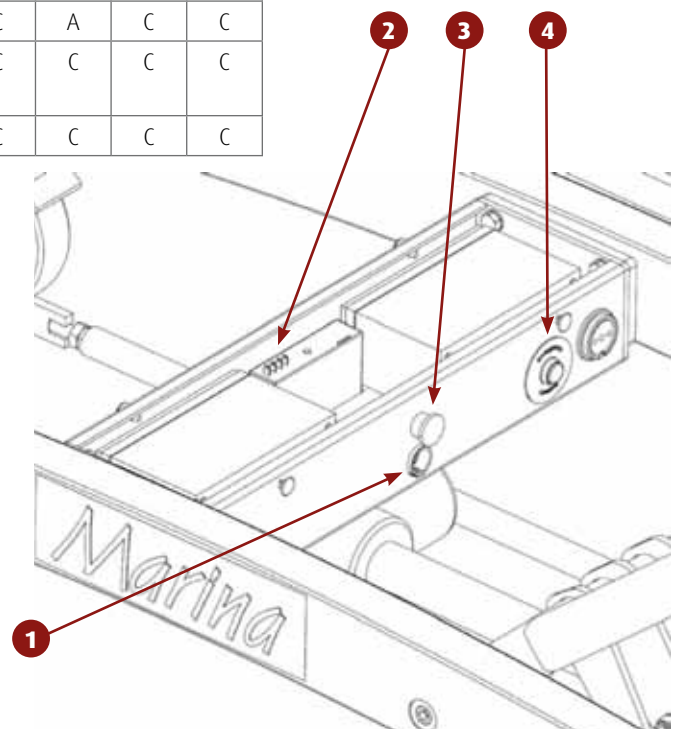
Required tools

- Multimeter.

Month	12	24	36	48	60	72	84	96	108	120
Emergency stop	C	C	C	A	C	C	C	A	C	C
Emergency lowering device	C	C	C	C	C	C	C	C	C	C
Operation	C	C	C	C	C	C	C	C	C	C

1. Connection for manual operation.
2. Control box.
3. Emergency stop.
4. Emergency lowering button.

- Check all functions (also pay attention to any noise). _____
- When the emergency lowering button is pressed, the lying surface should lower. _____
- When the emergency stop is pressed, the trolley should not respond to any command. _____
- When the electric connections are corroded, they have to be cleaned and sprayed with contact spray. _____
- Replace manual operation if the cable is damaged, kinked or overstretched. _____
- Check cable of the actuator for any kinks or other damage. _____



7. Battery + charger (61002350 electric)

Month	12	24	36	48	60	72	84	96	108	120
	C	C	A	C	C	A	C	C	A	C

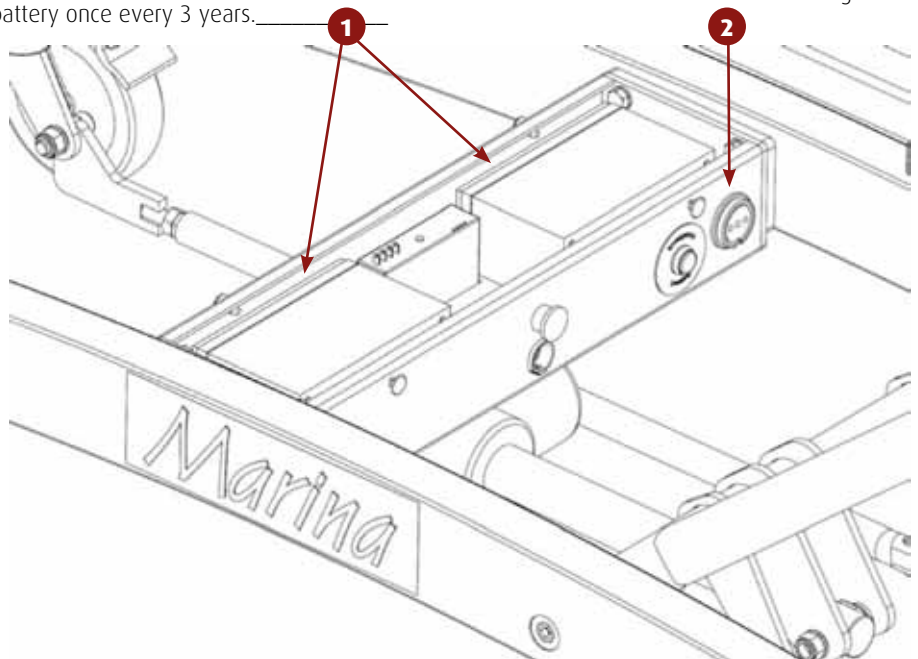
Required tools

- Tiewraps.
- Cutting pliers.
- Multimeter.
- Contact spray.

- A battery can be checked only when it is charged! _____
- _____
- Measure batteries separately and replace if $< 4.5A$ ($< 65\%$). Always replace both batteries _____
- _____
- Write the replacement date on the battery (waterproof pen) and put a date sticker on the rear of the motor cover. _____
- It is strongly recommended to replace the battery once every 3 years. _____

1. Battery (2x).
2. Charger connector.

- Check charger for any damage (plug + cable + magnet contact); if the cable is damaged, replace the whole charger.
- _____
- Check the charging voltage; it should be at least the value as indicated on the charger, and be more than 27 Volt.
- _____
- Check whether there is too much corrosion on the connectors; also check the charger connector on the trolley. Unplug the mains plug and spray it with contact spray.
- _____



8. Hefboom

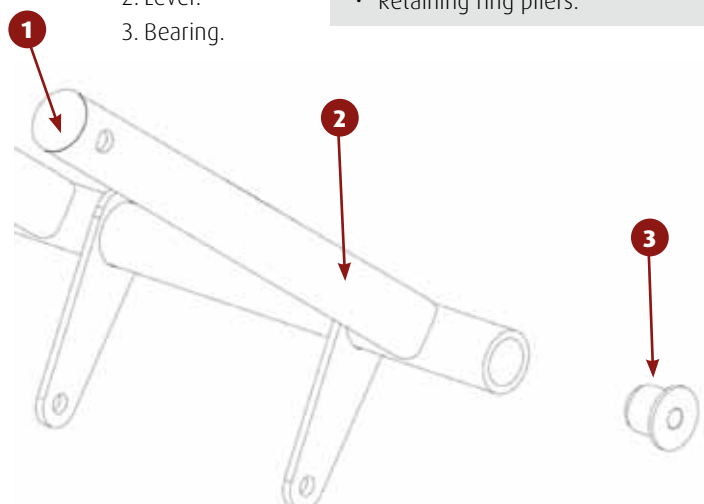
Month	12	24	36	48	60	72	84	96	108	120
	C	RC	C	RC	C	RC	C	RC	C	RC

Required tools

- Soft hammer.
- Flat screwdriver.
- Digital spirit level.
- Retaining ring pliers.

- Check for any damage. If the lever is bent, it should be replaced. If it is from aluminium, it should be replaced as a precaution. _____
- Remove insert cap. _____
- If the bearings of the levers have been worn away to an extreme level, the trolley should be returned to Lopital. _____
- Check retaining rings (8 in total; they connect the subframe to the two levers). _____

1. Insert cap.
2. Lever.
3. Bearing.



9. Stootrollen

Required tools

- Open-end/ring spanner 10 mm.
- Loctite (blue).
- Ceramic grease 03.0120.

Month	12	24	36	48	60	72	84	96	108	120
	C	C	A	C	C	A	C	C	A	C

- The buffer discs should rotate smoothly. _____
- If the buffer discs are damaged or worn, e.g. parts of the disc missing, they should be replaced. _____
- It is recommended to replace the buffer discs once every 4 years.
- _____

Method

- Unscrew bolts. _____
- Inspect sleeves and buffer discs (if damaged: new ones).
- _____

1. Fitting sleeve/cap.
2. Buffer disc.
3. M6 bolt.



Assembly

- Put grease on the sleeves. _____
- Put Loctite on the thread of the M6 bolt. _____
- Tighten buffer discs. _____

Date/Time PM Completed _____

Marina Part Number _____

Marina Serial Number: _____

Tech Signature: _____